

NEW COLLECTIONS

white body!

geotiles
cerámica

33,3 x 100

WHITE BODY

33,3x100 /
13"x40"



Wall Tiles
Revestimiento



White Body Tile
Pasta Blanca



Rectified
Rectificado



Matt
Mate



Gloss
Brillo



Thickness by number
Espesor según número



It is not recommend to
lay the tiles brickbond
(Brick-jointed) halfway
No se recomienda la
colocación de trabado
a mitad de pieza

BLANCOS



CARNABY



BRUSH



MOD



ISOLA



VALERIA



REVAN





RECTIFIED

33,3x100 /
13"x40"



* Blanco Brillo

BLANCOS



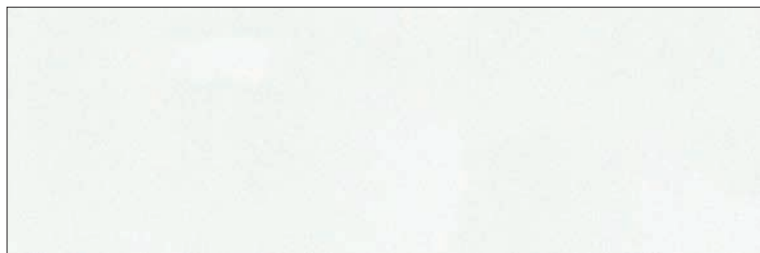


RECTIFIED

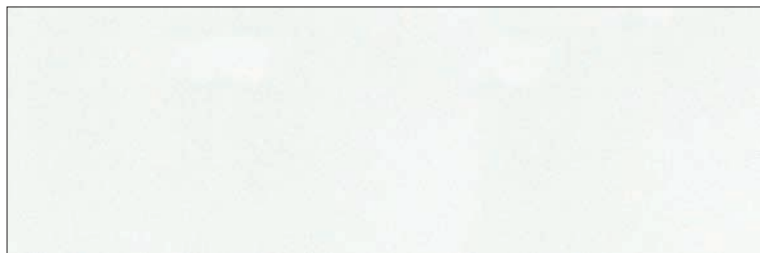
33,3x100 /
13"x39,3"



BLANCOS



Blanco Brillo 33,3x100 13"x40"



Blanco Mate 33,3x100 13"x40"



RECTIFIED

33,3x100 /
13"x40"



* RLV Carnaby Tan
Carnaby Noce

CARNABY



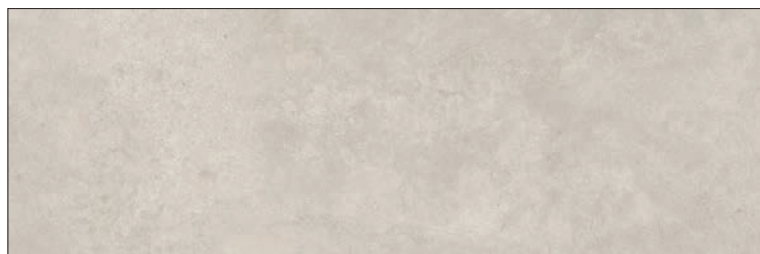


RECTIFIED

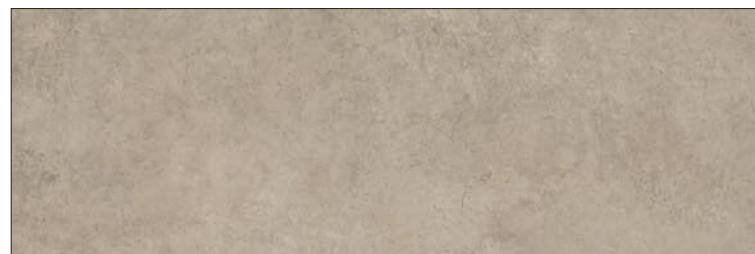
33,3x100 /
13"x40"



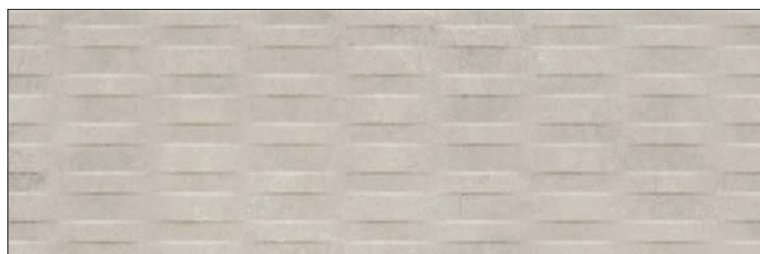
CARNABY



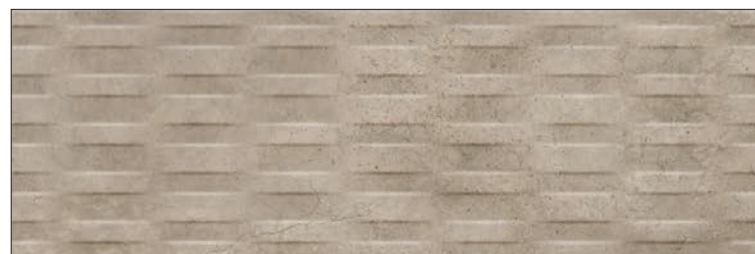
Carnaby Tan 33,3x100 13"x40"



Carnaby Noce 33,3x100 13"x40"



RLV Carnaby Tan 33,3x100 13"x40"



RLV Carnaby Noce 33,3x100 13"x40"

* Recommended Flooring / Pavimentos sugeridos: CARNABY

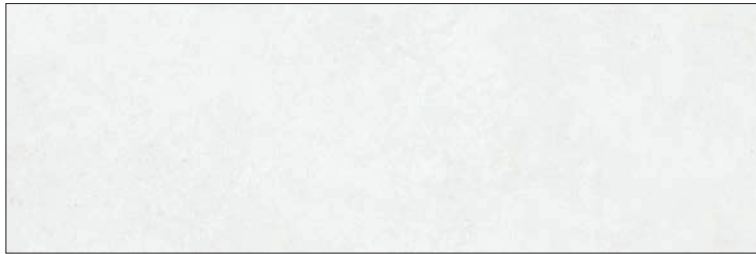


RECTIFIED

33,3x100 /
13"x40"



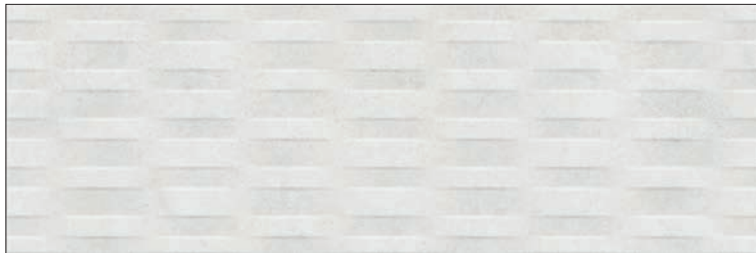
CARNABY



Carnaby Blanco 33,3x100 13"x40"



Carnaby Gris 33,3x100 13"x40"



RLV Carnaby Blanco 33,3x100 13"x40"



RLV Carnaby Gris 33,3x100 13"x40"

* Recommended Flooring / Pavimentos sugeridos: CARNABY



RECTIFIED

33,3x100 /
13"x40"

7

* Brush Perla
Brush Gris
Aqua Perla





RECTIFIED

33,3x100 /
13"x40"



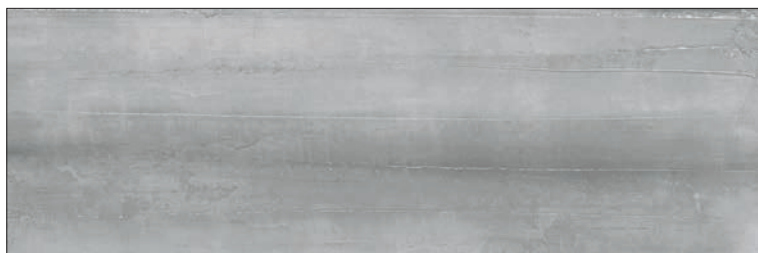
BRUSH



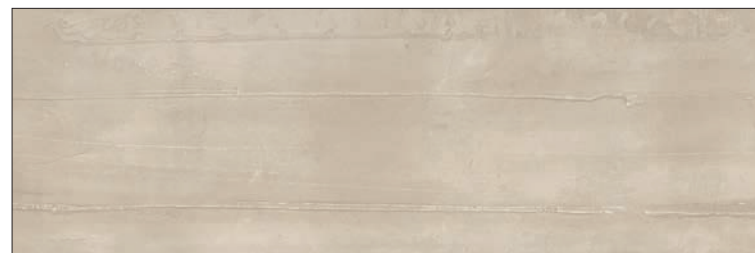
Brush Perla 33,3x100 13"x40"



Brush Marfil 33,3x100 13"x40"



Brush Gris 33,3x100 13"x40"



Brush Tan 33,3x100 13"x40"



Aqua Perla 33,3x100 13"x40"



Aqua Marfil 33,3x100 13"x40"

* Recommended Flooring / Pavimentos sugeridos: BRUSH - TOKIO



RECTIFIED

33,3x100 /
13"x40"



* RLV Mod Mix
Mod Gris



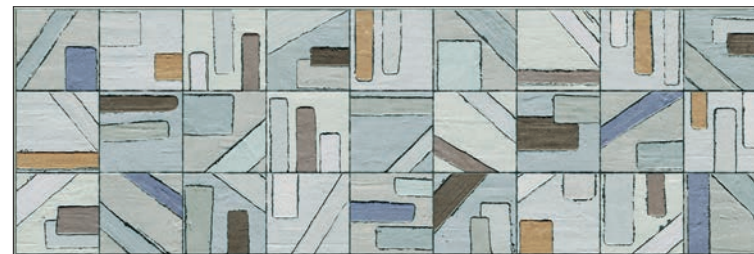


RECTIFIED

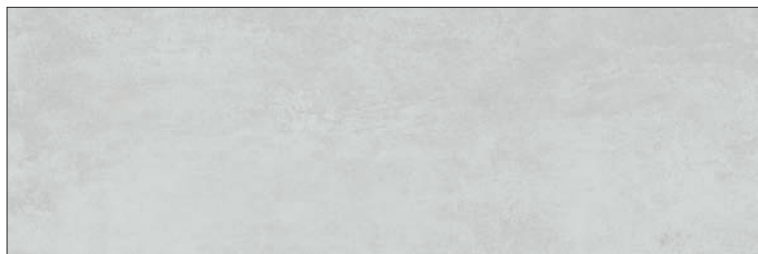
33,3x100 /
13"x40"



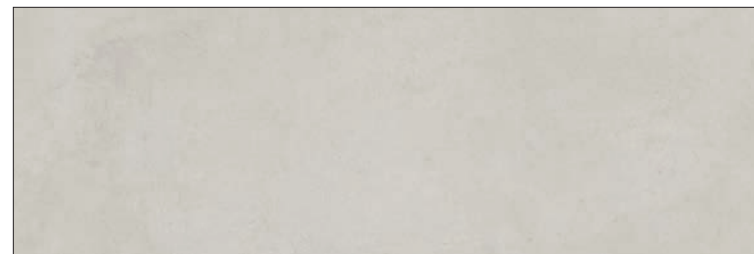
MOD



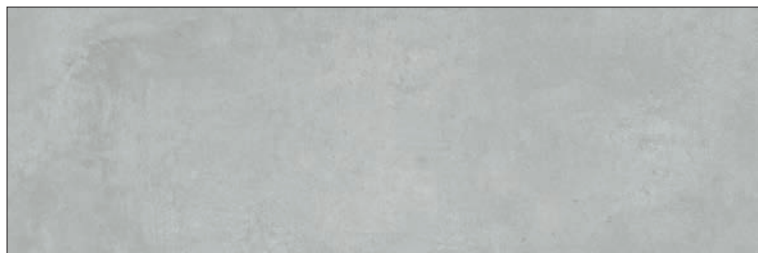
RLV Mod Mix 33,3x100 13"x40"



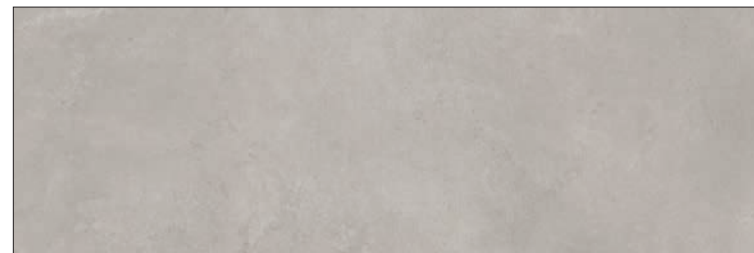
Mod Perla 33,3x100 13"x40"



Mod Nude 33,3x100 13"x40"



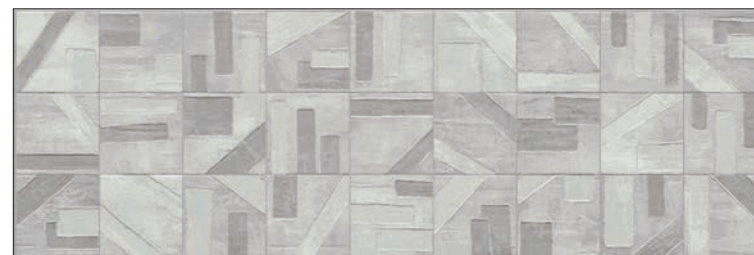
Mod Gris 33,3x100 13"x40"



Mod Taupe 33,3x100 13"x40"



RLV Mod Gris 33,3x100 13"x40"



RLV Mod Taupe 33,3x100 13"x40"

* Recommended Flooring / Pavimentos sugeridos: GROUND - CARNABY



RECTIFIED

33,3x100 /
13"x40"

7

* RLV Isola Sage
Isola Gris





RECTIFIED

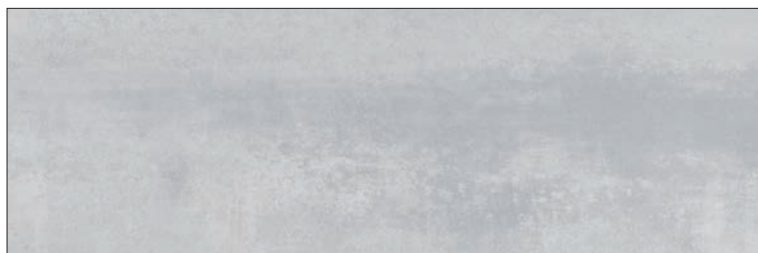
33,3x100 /
13"x40"



ISOLA



Isola Blanco 33,3x100 13"x40"



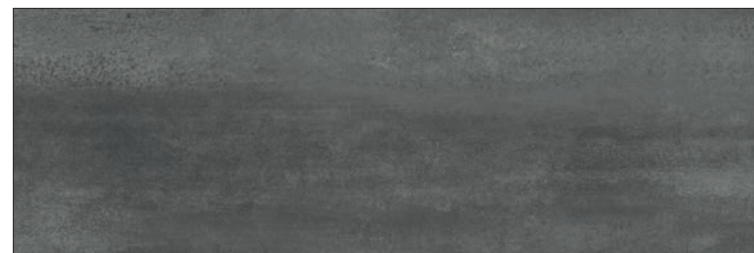
Isola Gris 33,3x100 13"x40"



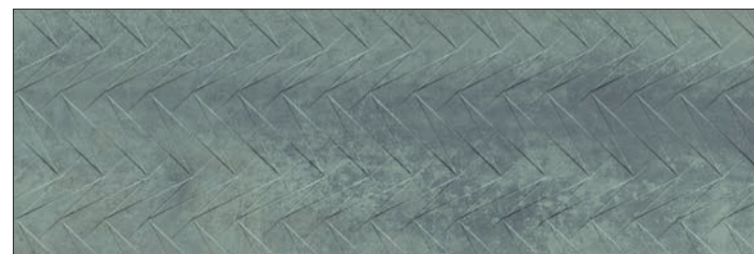
RLV Isola Gris 33,3x100 13"x40"



Isola Sage 33,3x100 13"x40"



Isola Marengo 33,3x100 13"x40"



RLV Isola Sage 33,3x100 13"x40"

* Recommended Flooring / Pavimentos sugeridos: MARS



RECTIFIED

33,3x100 /
13"x40"



* RLV Valeria Plata
Valeria Plata



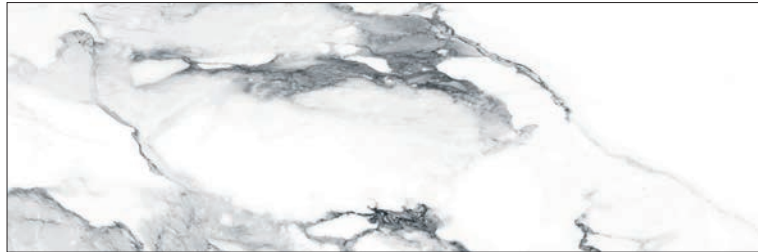


RECTIFIED

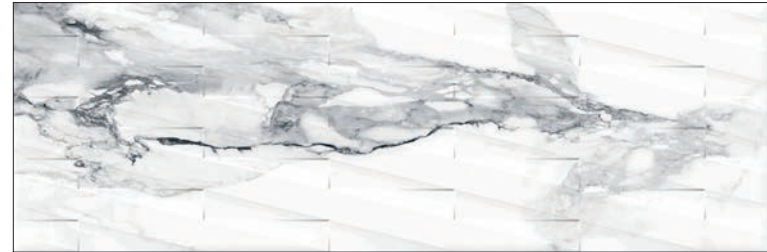
33,3x100 /
13"x40"



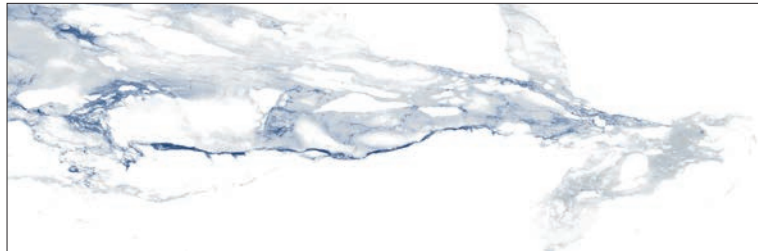
VALERIA



Valeria Plata 33,3x100 13"x40"



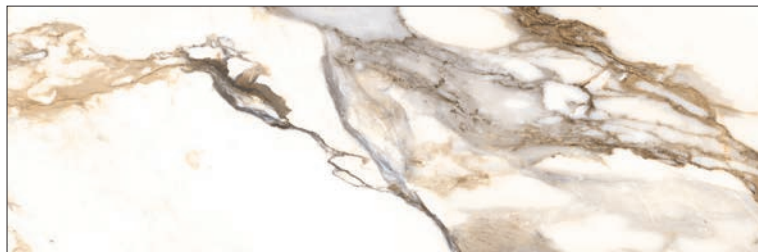
RLV Valeria Plata 33,3x100 13"x40"



Valeria Blue 33,3x100 13"x40"



RLV Valeria Blue 33,3x100 13"x40"



Valeria Oro 33,3x100 13"x40"



RLV Valeria Oro 33,3x100 13"x40"

* Recommended Flooring / Pavimentos sugeridos: VALERIA - CRASH



RECTIFIED

33,3x100 /
13"x40"

7

* RLV Revan Oro
Revan Oro



REVAN

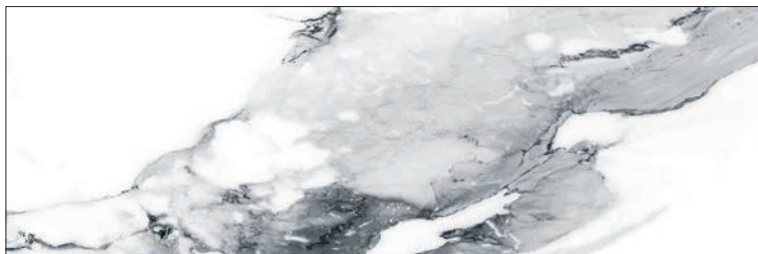


RECTIFIED

33,3x100 /
13"x40"



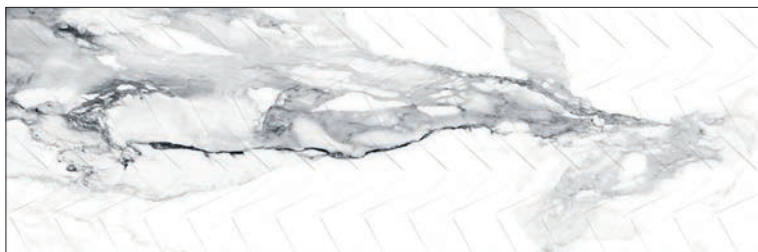
REVAN



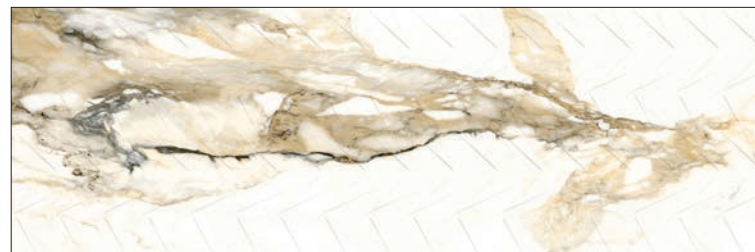
Revan Plata 33,3x100 13"x40"



Revan Oro 33,3x100 13"x40"



RLV Revan Plata 33,3x100 13"x40"









RLV Revan Oro 33,3x100 13"x40"

* Recommended Flooring / Pavimentos sugeridos: REVAN - CRASH

TECHNICAL FEATURES / CARACTERÍSTICAS TÉCNICAS

White Body / Pasta Blanca

						
STANDARD NORMES NORMAS DE ENSAYO	ISO 10545-2	ISO 10545-3	ISO 10545-4	ISO 10545-8	ISO 10545-13	ISO 10545-14
VALUE REQUIRED BY EN 14411 STANDARD VALORES PRESCRITOS NORMA EN 14411		> 10%	> 15 N/mm ² > 600 N	Test method available Método de ensayo disponible	Test method available Método de ensayo disponible	Test method available Método de ensayo disponible
AVERAGE VALUE VALOR MEDIO	Conforms to Standard Cumple la norma	14-16%	20-30 N/mm ² 700-1000 N	< 7.0 x 10 ⁻⁶ °C ⁻¹	Conforms to Standard Cumple la norma	Conforms to Standard Cumple la norma

Group BIII (gl) Water Absorption >10% / Grupo BIII (gl) Absorción de Agua >10%

 Dimensional Features Características dimensionales	 Water absorption Absorción de agua	 Modulus of rupture Resistencia a la flexión	 Linear thermal expansion Dilatación térmica lineal	 Resistance to stains Resistencia a las manchas
 Chemical resistance Resistencia química Ácidos and bases Ácidos y bases	Cleaning products and pool reactive agents Productos de limpieza y reactivos de piscinas			

Packing List

	Pcs/Box Pz/Caja	Sqm/Box m ² /Caja	Boxes/Pallet Cajas/Pale	Sqm/Pallet m ² /Palet	Kg/Box Kg/Caja	Kg/Pallet Kg/Palet
33,3x100	6	2	48	96	24	1.174

GEOTILES reserves the right to modify the packing of any product reference.

GEOTILES se reserva el derecho a modificar el packing (en relación al espesor de la pieza).

Geologica tile S.L.U. operates a policy of continuous development and reserves the right to make changes to its products, colours, engineering specifications, packaging codes without prior notice. Geologica tile has taken every effort to ensure that the information contained in the catalogue is correct at the time of publication. Due to the limitations of the printing process, the colours reproduced may vary slightly from the original product.

Geologica tile S.L.U. "Geotiles" aplica una política de continuo desarrollo de sus productos y se reserva el derecho a realizar cambios en los productos, colores, especificaciones técnicas y códigos sin previo aviso. Geologica tile ha realizado un esfuerzo considerable para que toda la información sea adecuada en el momento de la publicación del catálogo. A causa de las limitaciones del proceso de impresión los colores reproducidos pueden sufrir ligeras variaciones con respecto al producto original.

geotiles

cerámica

GEOTILES, S.L.U.
Carretera Vila-real - Onda, Km.6
Apdo Correos 116
12540 Vila-real (Castellón) SPAIN
Tel.: +34 964 522 700
www.geotiles.com